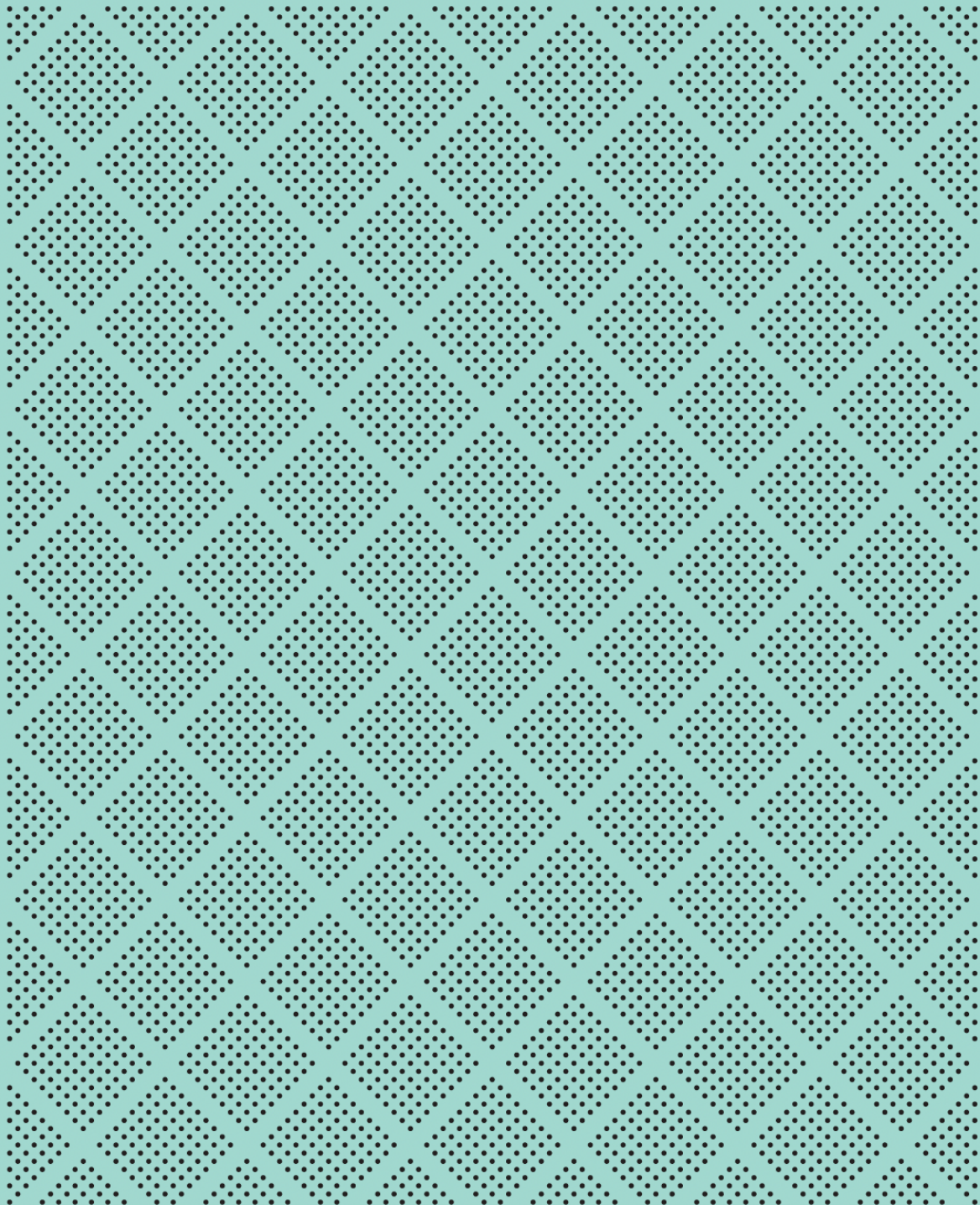


# Monthly Fund Fact Sheet

## Mint Diversified Alternatives Fund



DIVERSIFIED FUNDS



# Mint Diversified Alternatives Fund

## Investment Objective

The objective of the Fund is to provide access to alternative asset classes which have a low correlation to traditional assets. These alternative asset classes can include, but are not limited to, private equity, real estate, renewable energy, and hedge fund strategies. The Fund aims to provide capital growth through returns in excess of the benchmark HFRI Fund of Funds Composite Index (NZD Hedged), after fees and expenses, over the medium to long term.

## Performance

| Rolling periods                                 | 1 month | 3 months | 1 Year | 3 Years | 5 Years | 10 Years | Since inception |
|---|---------|----------|--------|---------|---------|----------|-----------------|
| Mint Diversified Alternatives Fund              | 1.05%   | 3.02%    | 7.26%  | n/a     | n/a     | n/a      | 3.07%           |
| HFRI Fund of Funds Composite Index (NZD Hedged) | 0.44%   | 1.22%    | 9.08%  | n/a     | n/a     | n/a      | 7.62%           |

| Calendar Years                                  | YTD   | 2023  | 2022 | 2021 | 2020 | 2019 | 2018 |
|---|-------|-------|------|------|------|------|------|
| Mint Diversified Alternatives Fund              | 2.65% | 1.17% | n/a  | n/a  | n/a  | n/a  | n/a  |
| HFRI Fund of Funds Composite Index (NZD Hedged) | 5.95% | 3.45% | n/a  | n/a  | n/a  | n/a  | n/a  |

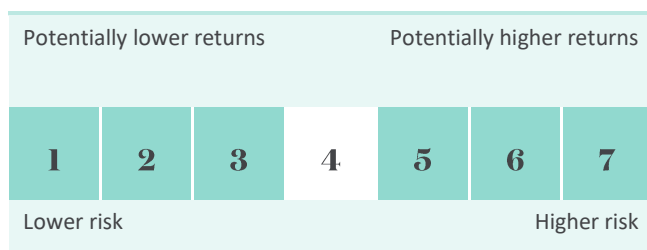
Performance returns greater than 3 months are per annum. Returns are after fees and before investor tax. Net after tax performance can be found in the latest Quarterly Fund Update, available on our website.

## Asset Exposures



- Real Estate – 9%
- Long/Short Equity – 13%
- Absolute Return – 15%
- Infrastructure – 10%
- Renewables – 11%
- Managed Futures – 13%
- Private Equity – 10%
- Global Discretionary Macro – 15%
- Cash – 4%

## Latest Risk Indicator



## Key Fund Facts

|                    |   |
|--------------------|---|
| Date of Inception: | 30 June 2023                                    |
| Fund Size:         | \$411k  |
| Unit Price:        | \$1.0385  |
| Typical Asset Mix: | 95% Alternatives                                |
| Benchmark:         | HFRI Fund of Funds Composite Index (NZD Hedged) |
| Latest FX Hedging: | 98%   |
| Total fund fee:    | 0.95%   |

## Contribution to Return by Asset Class

| Asset Class                | Contribution to Return | Portfolio Weight |
|----------------------------|------------------------|------------------|
| Infrastructure             | 0.4%                   | 10.0%            |
| Global Discretionary Macro | 0.4%                   | 14.6%            |
| Absolute Return            | 0.2%                   | 15.4%            |
| Managed Futures            | 0.2%                   | 13.1%            |
| Real Estate                | 0.0%                   | 8.9%             |
| Private Equity             | 0.0%                   | 10.2%            |
| Long/Short Equity          | 0.0%                   | 13.2%            |
| Cash                       | 0.0%                   | 3.5%             |
| Renewables                 | -0.1%                  | 11.1%            |
| <b>TOTAL</b>               | <b>1.1%</b>            | <b>100.0%</b>    |



### Portfolio Manager, Marek Krzeczowski

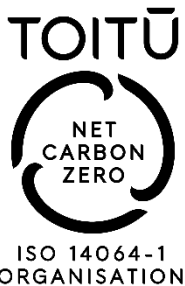
MSc

Marek has over 16 years' experience in the investment sector focusing primarily on quantitative analysis, investment research and financial modelling. He arrived in New Zealand in 2016 from Edinburgh where he managed the Investment Research Team at Tcam Asset Management and was responsible for helping to formulate and implement the firm's investment strategy.

At Mint, Marek is the Portfolio Manager for the Multi-asset class funds. He is also responsible for Strategic and Tactical Asset Allocation.

## Responsible Investing

For additional information on our Responsible Investing activities, please refer to our website where you will find our Responsible Investing Policy, our Stewardship Policy, Proxy Voting Statistics and our Quarterly Sustainability Report: [Responsible Investing | Mint Asset Management](#)



STEWARDSHIP CODE  
AOTEAROA NEW ZEALAND



**For more information on our Funds, please contact:**

Level 29, SAP Tower  
151 Queen Street, Auckland  
New Zealand

**P** 0800 646 833  
**E** [info@mintasset.co.nz](mailto:info@mintasset.co.nz)  
[www.mintasset.co.nz](http://www.mintasset.co.nz)